



**Rent Your  
Machine**



**A BETTER WAY TO**

**RENT**

---

OFFERING THE BEST CONSTRUCTION EQUIPMENT RENTAL  
SERVICES IN CONSTRUCTION, INDUSTRIAL, AND EVENT INDUSTRY.

# TABLE OF CONTENTS

Rent Your Machine	02
Maintenance Services	03
Manpower	04
BRM	05
Manufacturer	06
Aerial Lifts	07-09
Air Compressor	10-11
Cranes	12-16
Earth Moving	17-18
Material Handling	19-20
Power Generation	21-24
Tower Lights	25
Welding Machines	26

# WELCOME TO RENT YOUR MACHINE

Our goal is to combine the efficiencies of a marketplace with the latest technologies to help contractors operate more economically and effectively.

Rent Your Machine is a heavy equipment rental marketplace. Contractors rent equipment such as dozers, excavators, and trucks from Rent Your Machine to run their projects.

Our fleet consists of hundreds of heavy equipment which have been verified by our team to ensure the utmost productivity. When dealing with Rent Your Machine, a contractor benefits from reliable service, competitive prices, and a streamlined rental process.



## OUR MISSION

We Are Committed To Operating With A Safety First Approach To All Of Our Work. Regular Service And Maintenance Helps Keep Our Equipment Operating Reliably And Safely. In Addition, We Provide The Right Equipment For The Job, Safety Training, And Manufacturer's Safety And Instruction Manuals As Part Of Outfitting Customers With Rental Gear.

HITACHI

CAT

KOMATSU

Bobcat

SANY



# BROWSE EQUIPMENT WITH TYPES

# EQUIPMENT MAINTENANCE SERVICES

When risk is not an option, trust “Rent Your Machine” to protect and maintain your equipment with one of our flexible service plans.

Don't stress out for maintenance & Service on your owned equipment fleet

Your business is unique and we offer a variety of service options that can be customized to meet your specific needs. With equipment service plans to serve all of your repair and maintenance needs and single services available 24/7, you can count on RYM as your trusted service partner for any situation. Our large network of field service experts will collaborate directly with your local team to ensure your needs are met. We provide following maintenance services.

## PREVENTIVE MAINTENANCE SERVICES

- ▶ Fuel Filters
- ▶ Air Filters
- ▶ Oil Filters
- ▶ Engine Oil
- ▶ Hydraulic Oil
- ▶ Radiator Cleaning
- ▶ Lubrication

## MAINTENANCE & REPAIR

- ▶ Engine overhauling
- ▶ Repair of Hydraulic Pumps
- ▶ Repair of Hydraulic Hoses
- ▶ Hydraulic seals
- ▶ Tire rod boots
- ▶ Retreading of Tires





# MANPOWER

**“We give you the Right People for the Right Job”**

**We provide Long-Term and Short-Term Manpower. We use the most efficient technology and recruitment methodology to recruit the best talents for our prestigious clients.**

**We offer a wide range of Support services in terms of providing Technical & Non-Technical Manpower Services in the area of Construction, General Contracting, Industrial Contracting ,Operation and Shut down Maintenance.**

- ▶ Aramco & TUV Certified Heavy Equipment Operators
- ▶ Aramco & TUV Certified Rigger I II III
- ▶ Skilled labor
- ▶ Semi-skilled labor
- ▶ Helpers

# BLAST

## RESISTANCE MODULE (BRM)

1-Blast Resistant Module/Container

Size: 12.0mL X 3.0mW X 3.0mH – 40ft

2- Size: 6mL X 3.0mW X 3.0mH – 20ft

Blast load: 5, 8 and 10PSI, 200ms.

With Hazardous area Classified exterior  
electricals, HVAC & Fire alarm system





# TOP CUSTOMERS PREFERENCES OF CONSTRUCTION EQUIPMENT MANUFACTURER IN KSA




# AERIAL LIFTS



Boom Lift  
12 m



Boom Lift  
15 m



Boom Lift  
15 m



Boom Lift- Electric  
15 m



Boom Lift  
18 m



Boom Lift  
20 m





Boom Lift-Electric  
20 m



Boom Lift  
22 m



Boom Lift  
26 m



Boom Lift  
28 m



Boom Lift  
38 m



Boom Lift  
40 m



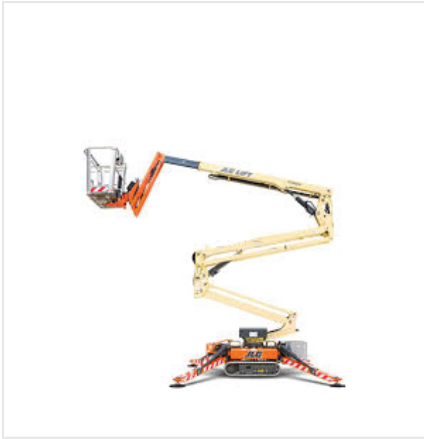
Boom Lift- Electric  
43 m



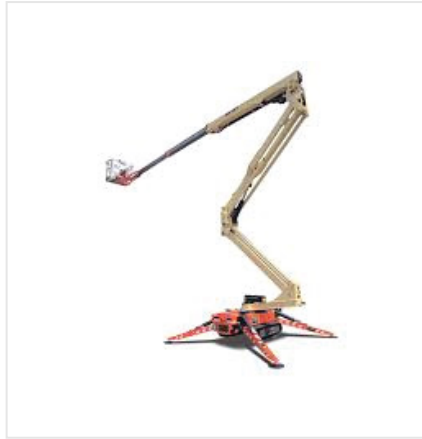
Boom Lift  
50 m



Boom Lift  
58 m



Spider Lift  
23 m



Spider Lift  
26 m



Scissor Lift  
10 m



Scissor Lift  
12 m



Scissor Lift  
12 m



Scissor Lift  
14 m



Scissor Lift  
18 m



Scissor Lift  
8 m



Scissor Lift  
15 m



# AIR COMPRESSOR



Air Compressor  
Model : **1500cfm**



Air Compressor  
Model : **1600cfm**



Air Compressor  
Model : **185cfm**



Air Compressor  
Model : **260cfm**



Air Compressor  
Model : **350cfm**



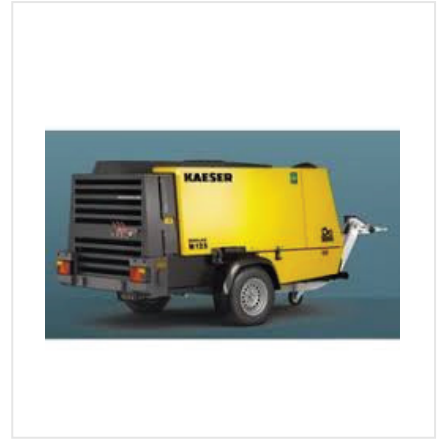
Air Compressor  
Model : **375cfm**



Air Compressor  
Model : **400cfm**



Air Compressor  
Model : **750cfm**



Air Compressor  
Model : **825cfm**



Air Compressor  
Model : **900cfm**





# CRANES



All Terrain Crane  
100 Ton



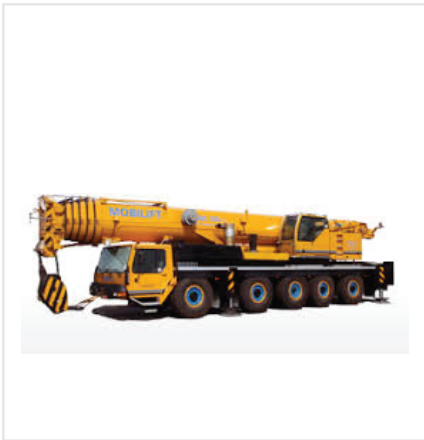
All Terrain Crane  
100 Ton 60 Mtrs



All Terrain Crane  
160 Ton



All Terrain Crane  
180 Ton



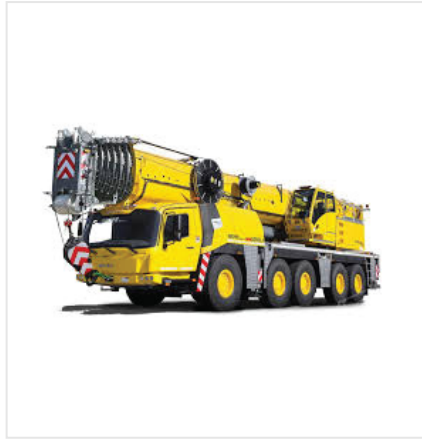
All Terrain Crane  
200 Ton



All Terrain Crane  
220 Ton



All Terrain Crane  
250 Ton



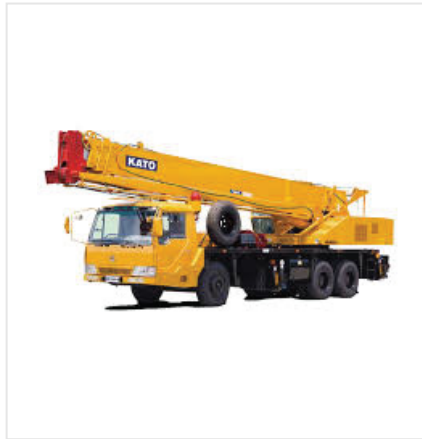
All Terrain Crane  
300 Ton



All Terrain Crane  
450 Ton



All Terrain Crane  
500 Ton



Crane  
100 Ton



Crane  
700 Ton



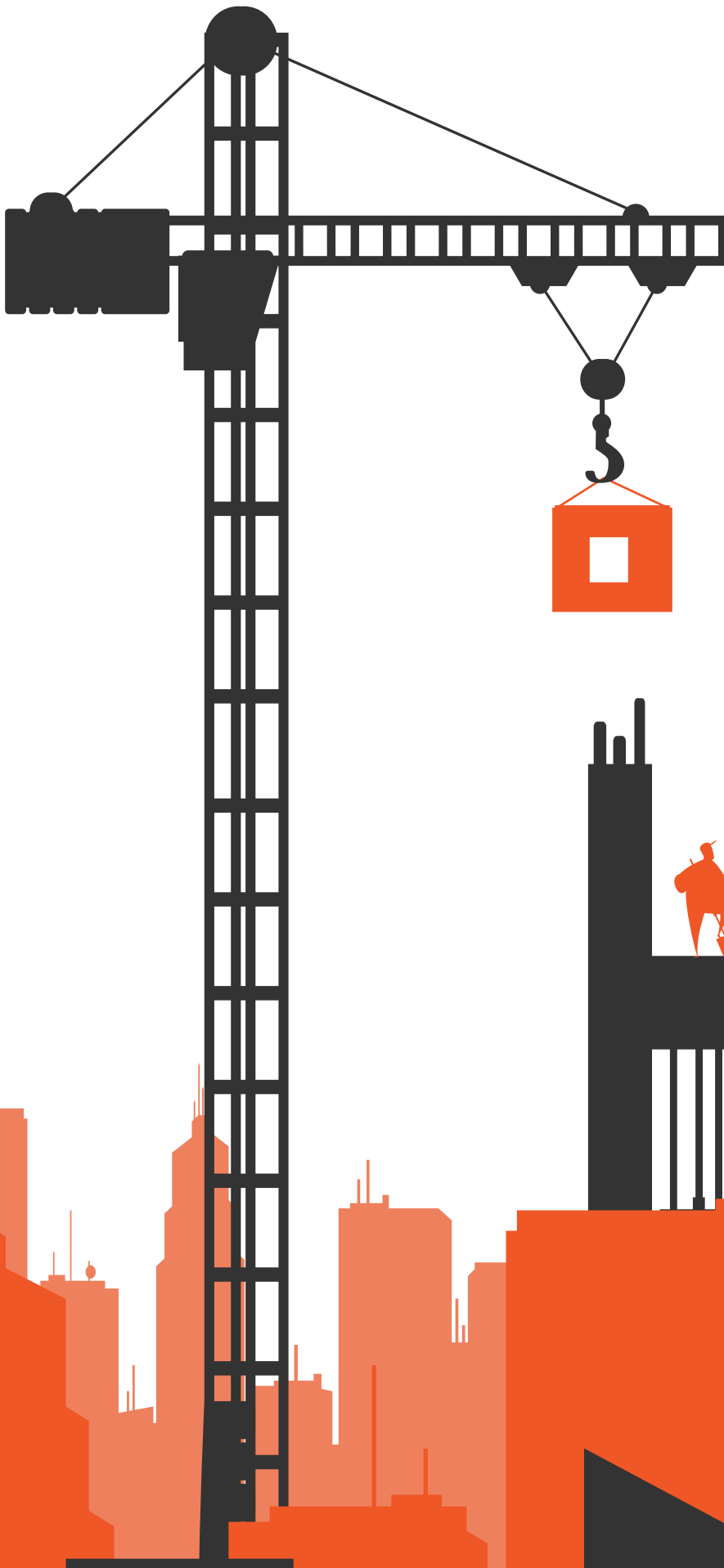
Crawler Crane  
100 Ton

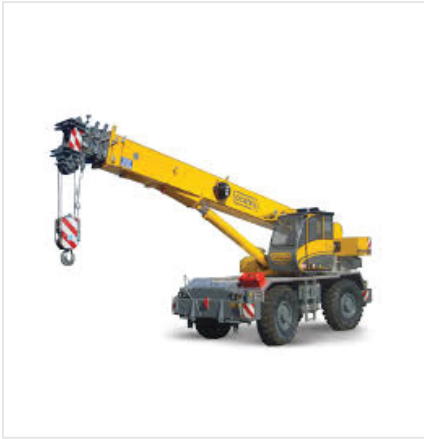


Crawler Crane  
320 Ton



Rough Terrain Crane  
120 Ton





Rough Terrain Crane  
**35 Ton**



Rough Terrain Crane  
**50 Ton**



Rough Terrain Crane  
**55 Ton**



Rough Terrain Crane  
**60 Ton**



Rough Terrain Crane  
**80 Ton**



Truck Crane  
**100 Ton 52 Mtrs**



Truck Crane  
**100 Ton 60 Mtrs**



Truck Crane  
**130 Ton**



Truck Crane  
**160 Ton**





Truck Crane  
25 Ton



Truck Crane  
30 Ton



Truck Crane  
50 Ton



Truck Crane  
70 Ton



Truck Crane  
75 Ton



Truck Crane  
80 Ton





# EARTH MOVING



Backhoe Loader



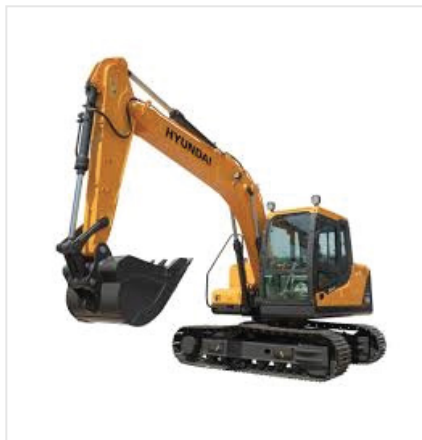
Compactor  
1.8 Ton



Compactor  
2.5 Ton



Double Steel Drums Roller  
10 Ton



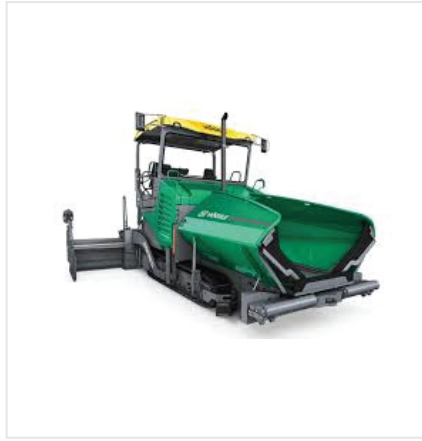
Excavator  
20 Ton



Grader



Mini Excavator  
**6 Ton**



Paver



Roller Compactor  
**10 Ton**



Roller Compactor  
**3 Ton**



Skid Steer Loader



Wheel Loader  
**15 Ton**



Wheel Roller  
**10 Ton**



# MATERIAL HANDLING



Electric Forklift  
1.5 Ton



Electric Forklift  
1.8 Ton



Electric Forklift  
2.5 Ton



Electric Forklift  
3 Ton



Forklift  
11 Ton



Forklift  
16 Ton



Forklift  
2.5 Ton



Forklift  
3 Ton



Forklift  
5 Ton



Forklift  
7 Ton



Telehandler



Telehandler





# POWER GENERATION



Generator  
**100 kva**



Generator  
**1000 kva**



Generator  
**1140 kva**



Generator  
**125 kva**



Generator  
**1250 kva**



Generator  
**1400 kva**



Generator  
15 kva



Generator  
150 kva



Generator  
20 kva



Generator  
200 kva



Generator  
230 kva



Generator  
250 kva



Generator  
30 kva



Generator  
300 kva



Generator  
35 kva







Generator  
**700kva**



Generator  
**75 kva**

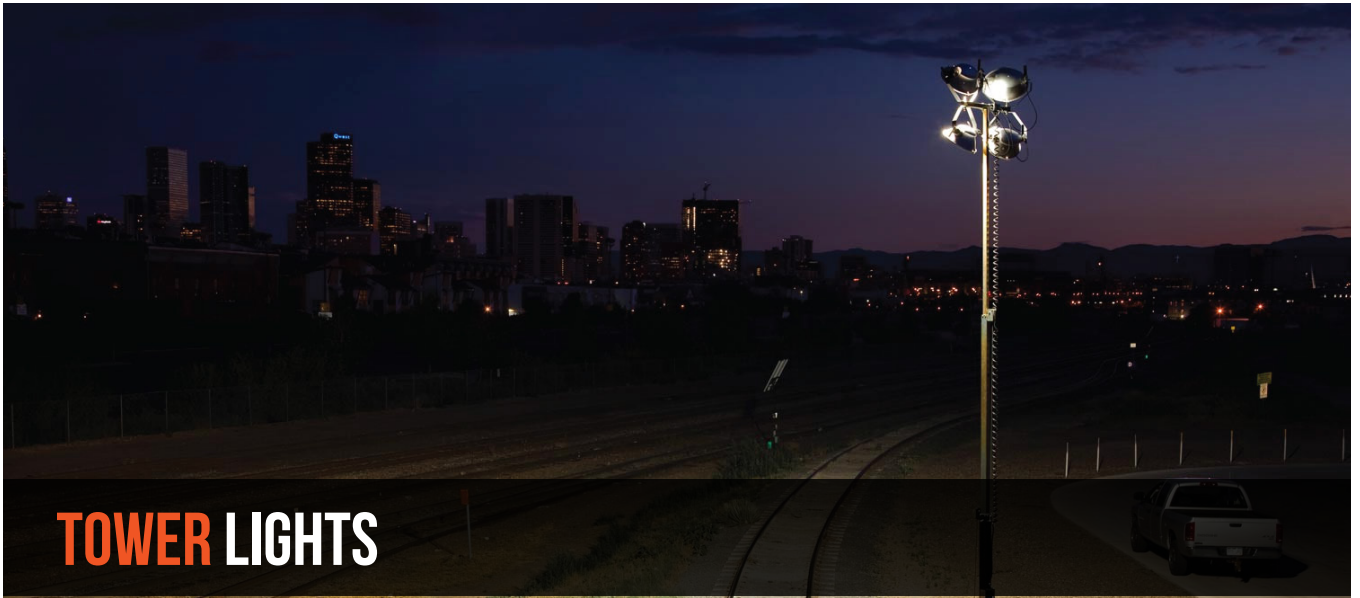


Generator  
**800 kva**



Generator  
**910 kva**





# TOWER LIGHTS



Tower Light





**WELDING** MACHINES



Welding Machine



## THE HAPPY ENDING

You can count on our team of industry experts, top-tier equipment & tools, and 24/7 customer service to keep your operations running smoothly, day or night.

You can rent top-quality and expertly-maintained equipment at Rent Your Machine. With a dedicated team of customer service and industry experts, we're here to help keep projects on time and on budget.

### GET IN TOUCH

#### KUWAIT OFFICE

+965 9494 4401    SUPPORT@RENTYOURMACHINE.COM

Al Hamra Tower, 59th Floor, Al Shuhada Street, Sharq, Kuwait City

#### KSA OFFICE

##### Eastern Region

+966 557217076

##### Central Region

+966 580378330

##### Western Region

+966 549917537

## HAVE A SPECIFIC EQUIPMENT REQUIREMENT?

SEND US THE REQUIREMENTS, WE'LL ARRANGE IT FOR YOU